

SQUIRREL



Two
Boom
Models

A self-propelled all terrain elevating platform
Raising Safety and Productivity



657 2B SD



807 2B SD

Manufacturers and designers of horticultural & viticultural equipment

Toll free : 1300 761 922
Phone: (08) 9731 1502
Fax: (08) 9731 1657
e-mail: info@crendon.com.au
www.crendon.com.au



- * **SQUIRREL** Elevating platforms
- * **NetWizz** Bird netting applicator
- * **SADIE** Orchard & vineyard sweepers
- * **OliNet** harvesting aid for olives etc
- * **BIN RUNNER** Bin Trailers

SQUIRREL'S unique foot control and smooth hydraulic system increases productivity up to 30% ahead of all other machines.

Standard features on all SQUIRRELS include.

- Free Wheeling Hubs and Towing Draw-bar
- Electric Hydraulic Three Speed
- Fail Safe Hydraulic Wet Brakes
- Planetary Drive Wheel Hubs
- Hand & Foot Control Option
- Best back up and Spare part
- Very Compact Design
- Hill Descent Wet Brakes
- Large Caster Wheels
- Safety Throughout
- Electric Throttle
- Side Swing Cage
- Enclosed Cage

Three speed is a standard feature which operates independently from the variable engine rpm, enabling the operator to select a wide range of speeds for safe and faster operation. There is a joy stick in the cage to change speeds, which can be done while driving.

A safety height sensor switches gear 3 off and reverts to gear 2 when cage is raised above 1/3rd height.

Gear 1 slow speed steady work at heights.

Gear 2 steady to fast work speed.

Gear 3 travelling speed.



CAGE is enclosed on three sides, safely protecting the operator from branches. Also sited in the cage is (L-R) electric throttle, E-Stop, start, crab steer, bin forks and electric hydraulic three speed, all sealed in an aluminium box.

Side Swing Cage

The cage rotates hydraulically 120° left through to right by using the left foot pedal. Cage swing is constant at all heights making the SQUIRREL ideal for a range of applications. This cage swing allows the operator to reach a greater area instantly without moving the base of the machine.



Left Foot Pedal

Toe down raises the cage.
Heel down lowers the cage.
Twist foot left and cage swings left.
Twist foot right and cage swings right.

Right Foot Pedal

Toe down drives forward.
Heel down drives in reverse.
Twist foot right to turn right.
Twist foot left to turn left.

Foot controls are directly mounted to hydraulic valves, allowing the operator to gradually phase getting proportional movements.

All controls: lift, side swing, drive left & right can be easily operated at the same time giving three dimensional movement, dramatically increasing operator productivity.

Safe In & Out of Cage

The SQUIRREL Cage: is safe and easy to enter and exit - no bending and twisting under hand rails. It is automatically closed and latched with 2 separate latches. As the rear seat belt is attached, getting in and out is safe and fast. To unlatch it requires 2 fingers to lift two latches, then push back. The latch handles are recessed in the back inside corner.

The Squirrel gate is fully Australian Standards & OHS safety compliant.

Hand & Foot Control Option

Joy-stick hand drive control cage and full foot button control is available. This is ideal for hire fleets and construction work.

These options are detailed under SQUIRREL Optional Extras Section.



Fully Enclosed Engine Compartment

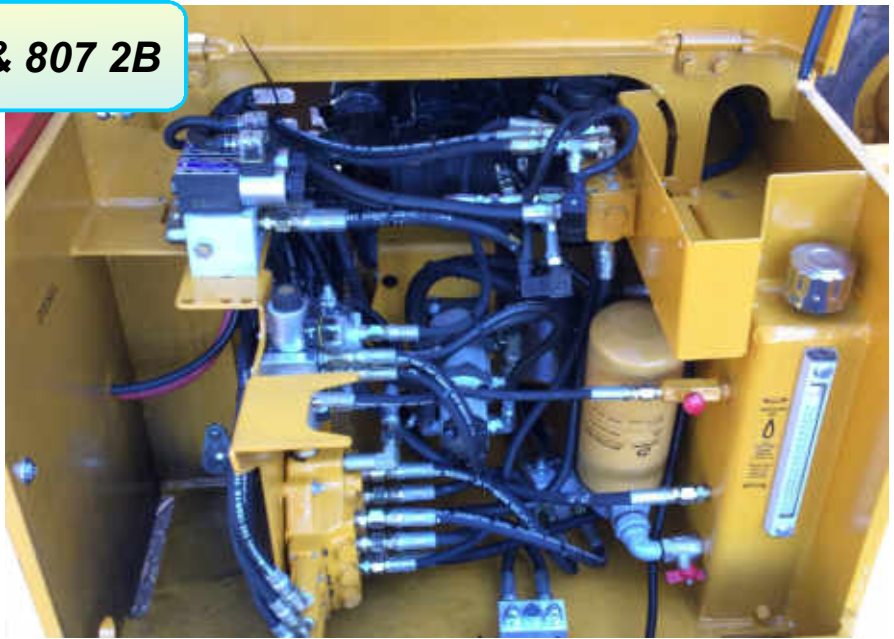
The bonnets are made from heavy steel and will not break with fallen or overhanging branches. For security, the bonnets are lockable and swing up with a gas strut to give easy access for servicing.

The very heavy frame RHS is 9mm thick, bonnet outer frame is 20mm thick.

A Vanguard v-twin cylinder 21hp petrol engine is standard or optional extra Kubota 3 cylinder water cooled 23hp diesel is available. The exhaust is extended and piped low down to the rear of the Squirrel away from workers. Engine auto stops when oil pressure is low.

E-Stop and Start switch, reset circuit breaker are accessible without lifting the bonnet.

A sealed enclosure protects all the electrical components.



Powerful Hydraulic System & Soft Drive

Hydraulics have the capacity to handle steep and adverse conditions. The system is protected by a very large fine 10 micron suction filter. Each motor hose has a relief valve fitted to eliminate pressure spikes. Very high pressure seals (300% higher than working pressure) are fitted to all hydraulic components.

Drive and Lift hydraulic control valves are mounted in the bottom frame and are pilot proportional operated from the cage.

Soft Drive. Special valving is fitted that gives a soft start and stop, this allows the operator to drive safely.

The SQUIRREL engine is fitted with a mechanical fuel pump, fuel filter and two 25 litre steel fuel tanks to allow for several days use.

The engine base is supported on springs to eliminate vibration. There are 3 trays inside the engine bay to store tools, wet weather clothing, draw-bar, etc.

Large HDPE bushes on zinc shafts

The boom, stabiliser bar, caster wheel, bogey rocker & lift ram all have replaceable HDPE bushes with a 10mm flange fitted on a zinc plated shaft. This gives safe long wear free pivot life.

The grease nipples are recessed in the end of the pins and grease extrudes in the centre gallery so it is almost self greasing.



Large Caster Wheels

Caster wheel is a large flotation tyre twin, providing excellent flotation and smooth ride in adverse conditions. In boggy conditions the caster wheel is more important than the drive wheels as it is always the caster wheel is locked or bogged first. Two independent caster wheels with an additional horizontal pivot provide a very smooth ride over uneven terrain. This allows the operator to comfortably work safely and quickly. These wheels also greatly reduce the possibility of bogging because of their independent rolling action.

Planetary Drive Wheel Hubs

We have our own design very heavy duty 8:1 planetary reduction gearbox with an integrated powerful hydraulic motor and incorporate fail safe multi-disc wet brakes which eliminate creep and auto brakes smoothly when driving down a hill. Hubs are standard with quick disengage freewheeling. This is the most powerful efficient drive giving maximum torque to the drive wheels. The wheels and hydraulics have the power to drive up and over another wheel.



SQUIRREL'S unique Double Boom

The 657 2B and 807 2B SQUIRREL have two booms. After the first long boom is fully raised the short boom raises automatically. The biggest advantage in this is the very short machine length and manoeuvrability at all times but with more height only when required.

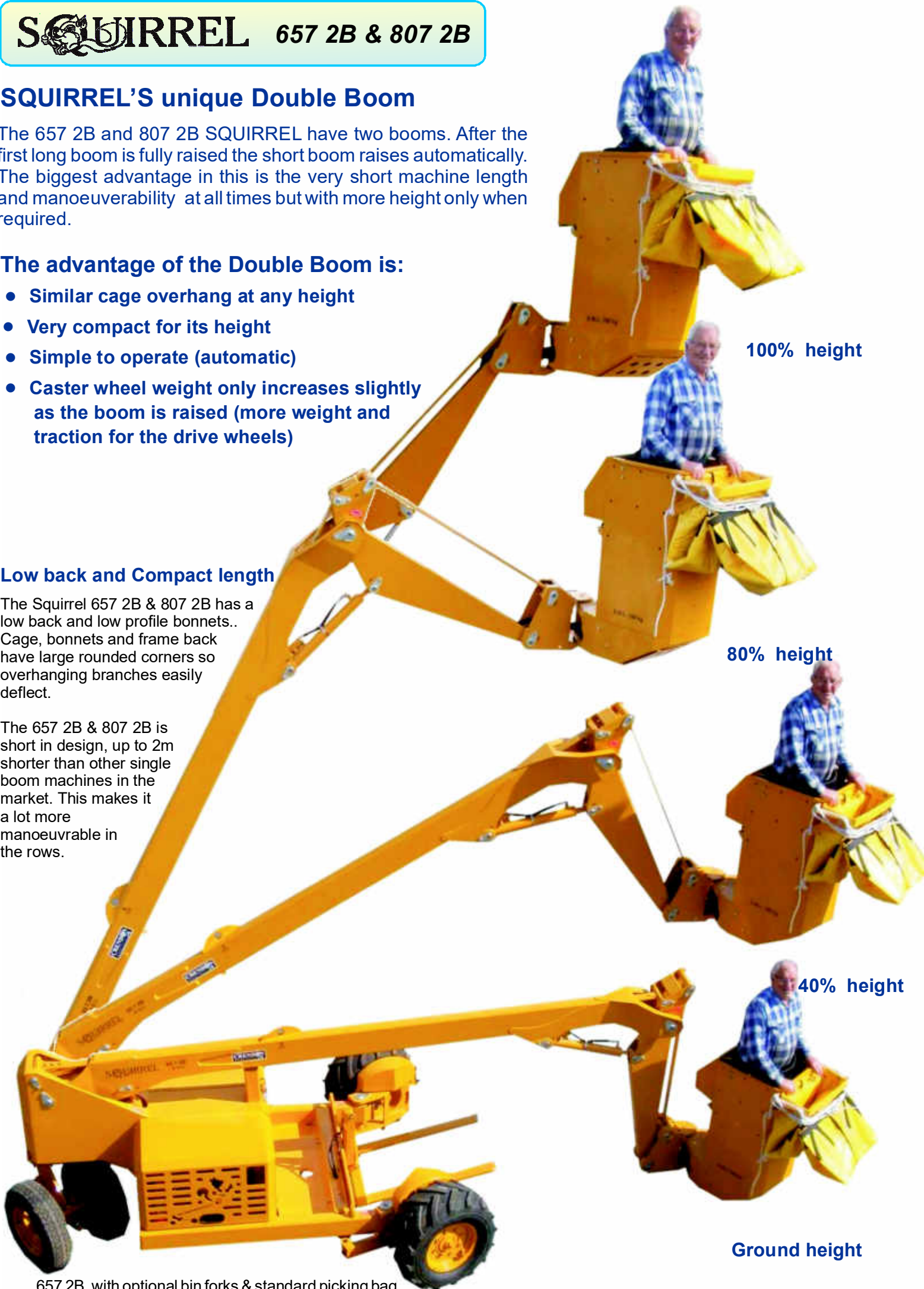
The advantage of the Double Boom is:

- Similar cage overhang at any height
- Very compact for its height
- Simple to operate (automatic)
- Caster wheel weight only increases slightly as the boom is raised (more weight and traction for the drive wheels)

Low back and Compact length

The Squirrel 657 2B & 807 2B has a low back and low profile bonnets. Cage, bonnets and frame back have large rounded corners so overhanging branches easily deflect.

The 657 2B & 807 2B is short in design, up to 2m shorter than other single boom machines in the market. This makes it a lot more manoeuvrable in the rows.



100% height

80% height

40% height

Ground height

657 2B with optional bin forks & standard picking bag

SQUIRREL 657 2B SD

8.5m Reach 6.5m Platform height

This new 657 2B SD Squirrel has been developed to incorporate all the latest features. Pilot proportional remote hydraulic valves and automatic boom sequence.

Safety throughout

The 657 2B has a SWL of 180kg and comes standard with 15" drive wheels, but bogey drive 15" wheels on walking beam (as pictured) makes the 657 2B the most versatile all terrain EWP available. With this bogey drive option the Squirrel is approved on slopes up to 15° at full height with cage side swing and crab steer in the least favourable position.



657 2B with optional 15" Bogey drive wheels and deluxe picking bag, cage fully lowered.

Wide Bogey drive tyres (760 Ø x 350 wide) (optional extra)

The 657 2B comes standard with 15" drive wheels, but bogey drive 15" wheels on walking beam, planetary 8:1 gearbox with hydraulic motor for each wheel, fail-safe brakes. The 15" wheels give the Squirrel superior traction and smooth ride over difficult terrain without bogging. Rims are hot dip galvanised for long life.



Towing & free wheeling

Heavy duty long draw-bar with ball hitch and free-wheeling drive hubs all standard on our Squirrels.



657 2B with optional 15" Bogey drive wheels and deluxe picking bag, boom at full height.

- Genuine foot controls SD (Soft Drive)
- Fully enclosed engine compartment
- Self lubricating replaceable bushes
- Crab drive wheels 20° right & 20° left
- Planetary wheel drive hubs
- Best back up and spare parts
- Electric hydraulic three speed
- Towing & free wheeling standard
- Diesel Kubota 3 cyl engine option
- Powerful hydraulic system
- Two caster flotation wheels
- Hand control option
- Safety throughout
- Bin forks (optional)
- Side swing cage
- Electric throttle
- Enclosed cage
- Very compact

SQUIRREL 807 2B SD

10m Reach 8m Platform height

This new 807 2B SD Squirrel has been developed to incorporate all the latest features. Pilot proportional remote hydraulic valves and automatic boom sequence. The boom is 1.5m longer than the 657 2B squirrel.

Safety throughout

The 807 2B squirrel has a SWL of 180kg is approved on slopes up to 15° at full height with cage side swing and crab steer in the least favourable position.



807 2B with standard
caster wheels cage fully
lowered.

Low back and Compact length

The Squirrel 657 2B & 807 2B has a low back and low profile bonnets. Cage, bonnets and frame back have large rounded corners so overhanging branches easily deflect.

The 657 2B & 807 2B is short in design up to 2m shorter than other machines in the market so this makes it a lot more manoeuvrable in the rows.

Wide Bogey drive tyres standard (760 Ø x 350 wide)

The 807 2B comes standard with bogey drive 15" wheels on walking beam, planetary 8:1 gearbox with hydraulic motor for each wheel, fail-safe brakes. The 15" wheels give the Squirrel superior traction and smooth ride over difficult terrain without bogging. Rims are hot dip galvanised for long life.



807 2B with optional caster
wheel cross axil at full height

- Genuine foot controls SD (Soft Drive)
- Fully enclosed engine compartment
- Self lubricating replaceable bushes
- Crab drive wheels 20° right & 20° left
- Planetary wheel drive hubs
- Bogey drive wide tyres standard (31x15.5x15")
- Best back up and spare parts
- Electric hydraulic three speed
- Towing & free wheeling standard
- Diesel Kubota 3 cyl engine option
- Powerful hydraulic system
- Two caster flotation wheels
- Hand control option
- Safety throughout
- Bin forks (optional)
- Side swing cage
- Electric throttle
- Enclosed cage
- Very compact

SQUIRREL 657 2B & 807 2B

Crab steer drive wheels

Both 6572B & 8072B have crab steer drive wheels as standard. The wheels turn 20° right & 20° left and is operated from a switch in the cage. This standard feature makes the Squirrel more manoeuvrable in the row, speeaping up production.

When the drive wheels are crabbed to the left and cage is swung to the right the working overhang sideways is very helpfully.



Storage area

Both 6572B & 8072B have a open storage area in front of the engine compartment. This provides room for tank for mango de-sapping solution and other requirements.

SQUIRREL OPTIONAL EXTRAS



Amber flashing light

Amber flashing light is fully protected from falling prunings. This option is recommended if working on the roadside or industrial sites. Some applications may require two flashing lights.



Hydraulics tool outlets

Hydraulics tool outlets in cage with on/off & safety valve 20-40 l/pm 1,700 psi.



15" Bogey drive wheels (Std on 807 2B Opt on 657 2B)

4 ea 31x15.5x15" 8 ply bogey drive wheels provide maximum traction and stability. This option is an up-grade from single 15" drive wheels and recommended when working in soft or steep ground conditions.



Engine chain saw rack

Wood and rubber belt lined chain saw holder.



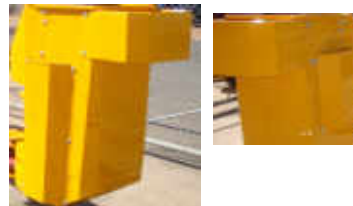
Picking Bag - Standard

The Standard picking bag is fully padded with multiple filling stages and a drawstring to eliminate bruising - only requiring four bags to fill one bin.



Picking Bag - Deluxe

The Deluxe picking bag is fully padded with four filling stages, and offers added protection from limbs by a steel cover which eliminates all bruising - requiring 5 bags to fill one bin.



Bird netting installing trays rack

Three trays bolted to the cage left for plastic clips, front all tools, right long wire splices.



One man cage, Joy stick drive & foot control

Single man cage with hand joystick drive controls. This cage has a 100mm longer floor so that the operator has room to move without bumping the pedals. This is ideal for hire fleets and industrial applications. The cage still rotates 60° left and 60° right.



Bin forks

Hydraulically operated from the cage. A set of bin forks allow the operator to carry and shift bins in the row efficiently. Forks are easy to pin on and off. These forks have a maximum lifting capacity of 600kg.



Diesel Engine

The Kubota 23 HP D902 3 cylinder water cooled diesel engine provides a quiet, very reliable, efficient alternative to petrol for heavy duty applications and has low oil pressure and high water auto shut down, and large diesel filter with hand pump.



Caster wheels cross axle

For the smoothest ride a Caster wheel cross axle is available. Large flotation tyre on a separate caster pivot is mounted at each end.

SQUIRREL Specifications

	Squirrel 355 LB SD	Squirrel 505 SD	Squirrel 655 SD	Squirrel 805 SD	Squirrel 536 LB SD	Squirrel 656 LB SD	Squirrel 806 LB SD	Squirrel 657 2B SD	Squirrel 807 2B SD	
Cage platform height	3.5m	5m	6.5m	8.0m	5.5m	6.6m	8.0m	6.5m	8.0m	
SWL	180kg	150kg		200kg	200kg			180kg		
Total Length when boom fully lowered	3.85m	4.4m	5.28m	7.4m	5.5m	6.9m	8.65	5.8m	7.4m	
Cage overhang when Down / Full Height	1.6m / 0.55m	2.6m / 0.75m	2.03m / 0.42m	3.15m / 0.52m	2.5m / 0.35m	3.34m / 0.66m	4.72m / 1.1m	2.1m / 0.48	3.38m / 0.91m	
With outside tyres wheel in / wheel out	2.1m	2.35m	1.9, 2.4, 3m		2.35m / 2.7m (spin wheels around)			2.35m / 2.7m (spin wheels around)		
Rear machine height	1.3m	1.9	2.7m	3m	1.57m			1.5m		
Ground clearance	0.2m	0.35m	0.35m	0.35m	0.36m			0.33m		
Total Weight approx.	1.2	1.6	1.6	2	1.8	2.2	2.3	2.5	2.7	
Maximum slope sideways, wheel in / wheels out	10° at full height	7.5° at full height			12.5° at full height			10° at full height	12° / 15° at full height	15° / 15° at full height
Maximum slope forwards, wheel in / wheels out	10° at full height	15° at full height			15° at full height			12.5° at full height	15° / 15° at full height	15° / 15° at full height
Ground Speeds kmph Gear 1, 2, 3	0-3, 0-4, 1-7 kmph	0-3, 0-4, 1-7 kmph	0-2, 0-3, 1-6 kmph	0-1.4, 0-2, 1-4 kmph	0-2, 0-3, 1-6 kmph	0-1.5, 0-2.8, 1-5 kmph	0-1.5, 0-2.8, 1-5 kmph	3; 0-1.4, 0-2, 1-4 kmph	3; 0-1.5, 0-2, 1-4 kmph	
Wheel torque (Max)	2,800 N-m	3,000 N-m	3,680 N-m	4,480 N-m	3,000 N-m	3,680 N-m	4,480 N-m	4,480 N-m	5,120 N-m	
Standard Drive wheel tyre	26x1200x12 8 ply				31x15.5x15 8 ply	bogy wheel drive 4 x 31x15.5x15 8 ply		31x15.5x15 8 ply xtwo	31x15.5x15 8 ply xfour	
Caster wheel tyre 25x10x12 6 ply	one	two			two		four	two		
Engine	16 HP, V twin, OHV, Vanguard				16 HP, V twin, OHV, Vanguard	21 HP, V twin, OHV, oil cooler, Vanguard		21 HP, V twin, OHV, oil cooler, Vanguard		
Optional extra										
15" Drive wheel	Optional				Standard	Standard		Standard		
Bogey Drive wheels	4 x 26x1200x12 8 ply				4 x 26x1200x12	Standard 15"		Optional	Standard 15"	
Diesel Engine Option extra	not available	23hp Kubota D902 3 cyl water cooled			23hp Kubota D902 3 cyl water cooled			23hp Kubota D902 3 cyl water cooled		
Air Compressor cfm	13 / 22	13 / 22 / 30			13 / 22			not available		
Bin Forks	Optional	not available			Optional			Optional		
One Man Cage Hand & Foot Control	Optional				Optional			Optional		
Two Man Cage Hand Controls	not available			Optional	Optional		not available	not available		
Hydraulic Wheel Retraction	not required (fixed wheel base)		Optional		not required (fixed wheel base)			not required (fixed wheel base)		
Crab Drive Wheels	not available				not available			Standard		
Hyd Outlets in Cage	Optional				Optional			Optional		

Available through your local dealer

Warranty 12 month from date of delivery.

Disclaimer : The pictures and information in this brochure are a guide only. Specifications are subject to change without notice and without liability expressed or implied.